



### **Thank You!**

We are so excited you want to be a part of this great cause! Here are a few details you need to know. *If you are a Relay participant, please also read the Relay specific instructions at the bottom of this email.*

**Race Date:** March 16, 2019

**Location:** Start & Finish Line located at Greenleaf Park in the Provenance Neighborhood in South Shreveport. [Google Maps Link Here](#)

### **Race Day Schedule**

6:00 am – Packet Pickup opens  
7:15 am – Packet Pickup closes  
7:25 am – Racers should be in the corral  
7:25 am – Invocation  
7:30 am – Race starts  
10:15 am (approx.) – Awards  
11:00 am – Race cut-off

### **Packet Pickup**

Friday, March 15, 2018 from 4:00-6:00 pm.  
Saturday, March 16, 2018 from 6:00-7:15 am.  
Packet Pickup for both days is located at the Provenance Clubhouse on Woodberry Ave.  
[Click Here for Directions](#)

**Race Route:** Please see the maps on the following pages or you can view it online here.  
<http://www.mapmyrun.com/routes/view/1212262360>

**Course Time Limit:** 3.5 hours.

**Aid Stations:** Aid stations will be supplied with water and sports drink. There will be a minimum of 8 aid stations on the course.

**Timing:** The race will be electronically timed. The timing chip for all Half Marathoners will be attached to their race bib. For Half Marathon Relay participants, you will need to pick up your timing band on race morning.

**Awards:** All finishers will receive a finisher's medal. An Award will be given to the top 2 runners in the following categories for each gender: Overall, 19 & Under, 20-24, 25-29, 30-34, 35-39, 40-44, 45-49, 50-54, 55-59, 60-65, 65+. An award will be given to the top 2 relay teams for All Male, All Female, and Coed Teams.

**Parking:** Parking will be in designated areas. We will have volunteers directing race traffic and parking on site. See the parking map in the maps section at the end of this document.

### Relay Specific Details

- 1) You will each receive a race bib at packet pickup but you will need to pick up your timing band the morning of the race. Timing bands will be available for pickup next to the packet pickup tables. ***If you do not pick up the timing band your team time will not be recorded and you will not be eligible for awards.***
- 2) Logistics: This is just a suggested option. If you figure out another way, such as having a personal chauffeur, feel free to come up with your own logistics! Relay member #1 will start in the corral. Relay member #2 will drive to the Southern Trace Country Club to park. Please use the Norris Ferry Road entrance (East Entrance) to avoid the race route. Relay member #2 will need to either leave the keys in a designated spot on the car (i.e. wheel well), pass them to Relay member #1 when switching the timing band. Relay member #1 will receive their medal at the switch point and then drive to the finish line to watch their relay partner finish. Again, please use the Norris Ferry gate (East Side).
- 3) All relay teams must switch their timing band at the designated relay switch area. There will be course monitors there to make sure you know where the switch point is. The first leg of the relay is slightly shorter than the last leg. Decide your relay order accordingly. See picture below.

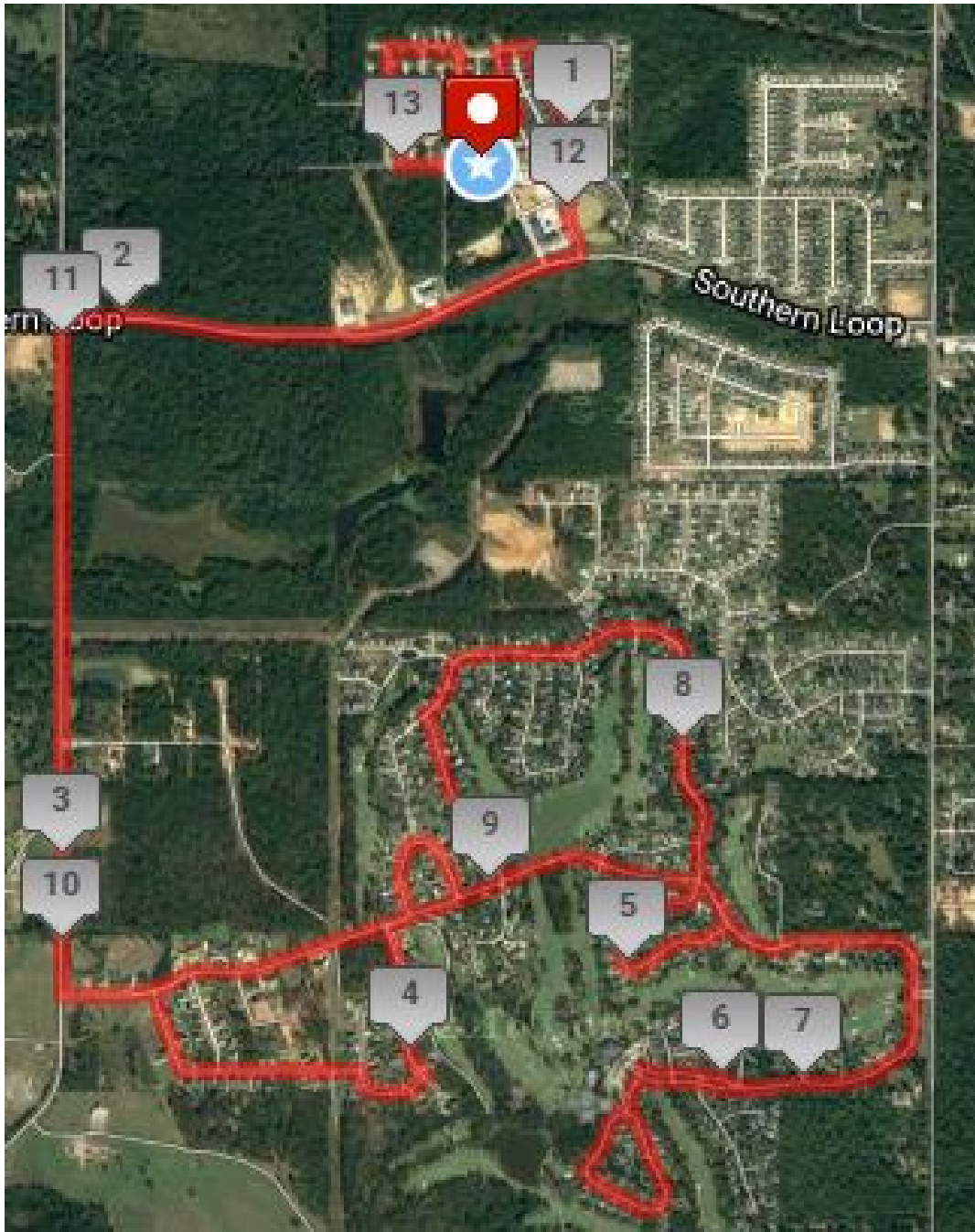


# Parking Map

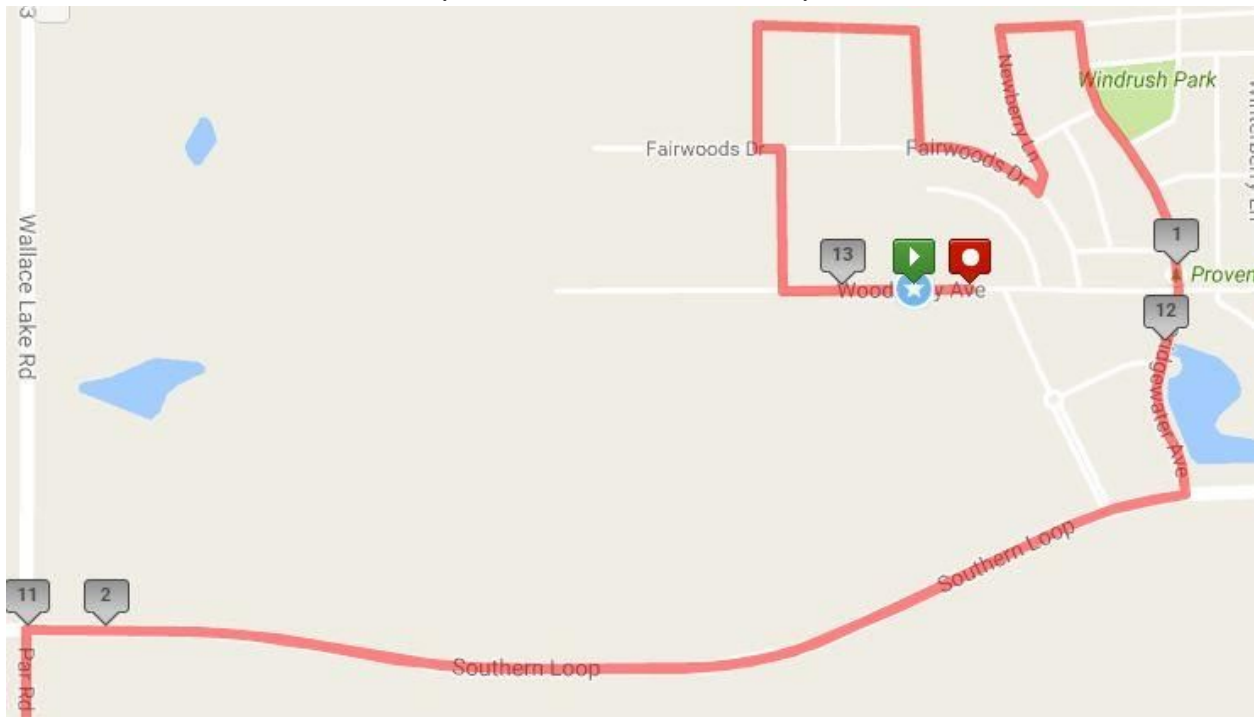


# Course Maps

(Full Course)



### (Provenance Section)



### (Southern Trace Section)



## **Inclement Weather Policy**

**Rain**– The event will NOT be cancelled due to rain alone unless the downpour is such that athletes, police, and volunteers lose visibility or there is a threat of flash flooding, making situations unsafe. If this occurs, we will wait until the rain subsides and follow the same procedure listed for lightning conditions (minus the 30 minute rule).

**Lightning** – In the event of lightning the race will be postponed by 30 minutes every time lightning is spotted and thunder is heard within 6 miles of the event. Please note that every time lightning strikes and thunder is heard within 6 miles of any part of the race course, we must restart the timing of 30 minutes increments. If the race must be delayed over 1 hour, the race will be cancelled.

**Tornado Warning** – If at any time before (race morning close to start time) or during the event, a tornado warning is issued, the race will be cancelled.

**On Course Cancellation** – If the race is canceled due to storms (lightning and/or excessive rain) or tornado warnings while it is in progress we will do everything in our power to alert everyone on the course. Race officials will immediately communicate with police, who will immediately begin doing all they can to warn participants and direct them to safety. We will do everything in our power to assist those who are still on course. If you see lightening during the race, you should seek immediate shelter via open stores, buildings, garages, homes and/or any other means of protection from the dangerous conditions. **If it gets bad and we are not there to help you off the course, please do everything you can to keep yourself safe and take shelter.** Again, if you are told by a race official or police officer to reroute and take shelter during the race, know that the race has been officially cancelled.